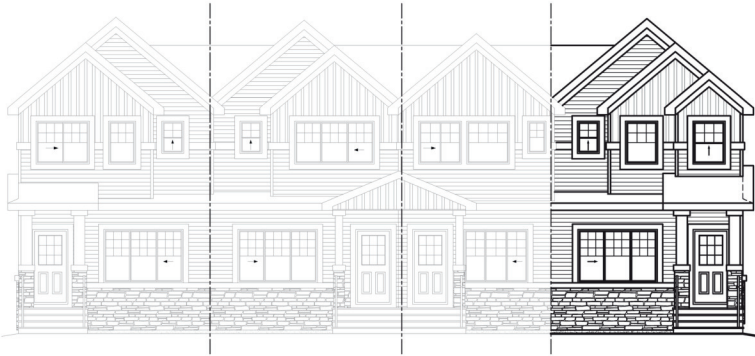


Novara II

Job 2575-DM

88 Dansereau Way, Beaumont



1,269 sqft

9'-1" Main Floor Ceiling Height

Luxury Vinyl Plank throughout Main Floor

Quartz Countertops in Kitchen & Bathrooms

Rough-In Smart Home Security System

Tile in all Second Floor Bathrooms

Appliance Allowance

Rough-In Side Entrance

Stand-up Shower in Ensuite

Double Detached Garage

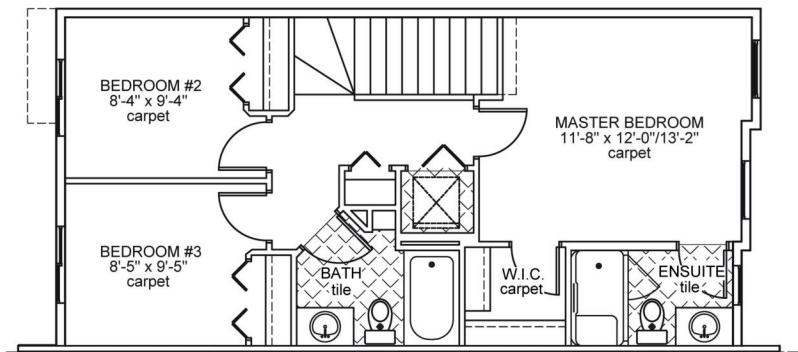
Rear Concrete Patio

No Condo Fees

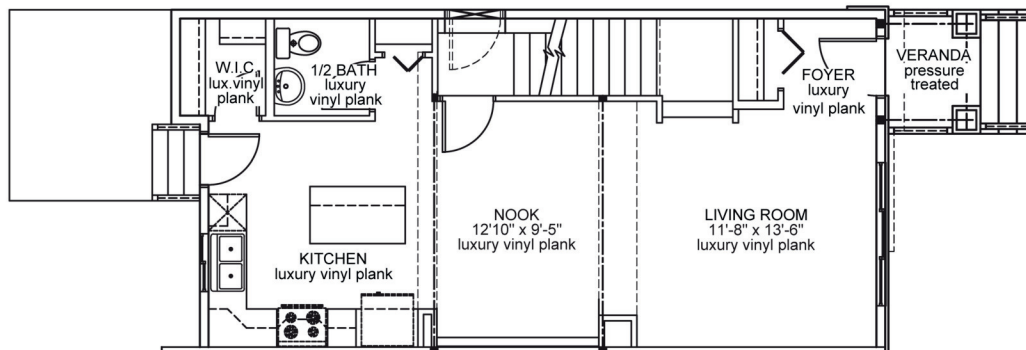
Front & Rear Landscaping

Super Common Wall System (Better Sound Barriers and Smell-Proof)

High Efficiency Furnace



Upper Floor Area: 613 sqft



Main Floor Area: 656 sqft

JOB 2575-DM - www.montorio.ca - 780-737-1549