



Novara IV

Job 2611-MC

6258 - 175A Avenue NW

1,557 Sq.Ft.

9'-1" Main Floor Ceiling Height

Luxury Vinyl Plank throughout Main Floor

Side Entrance

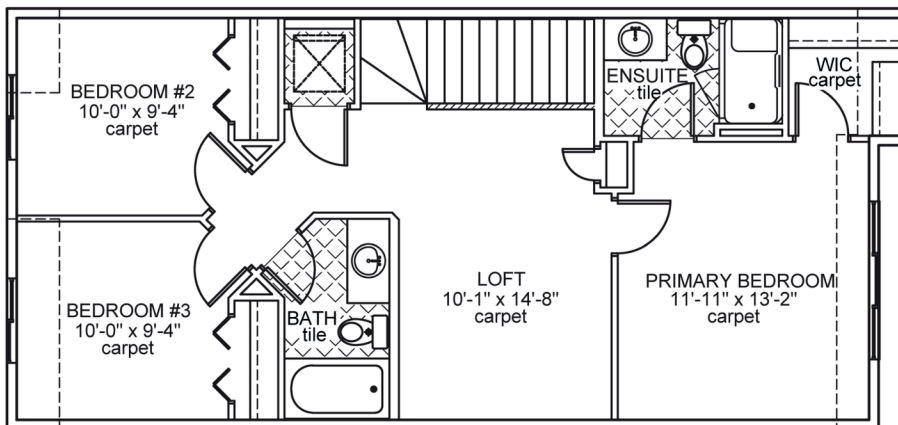
Appliance Allowance

Quartz Countertops in Kitchen & Bathrooms

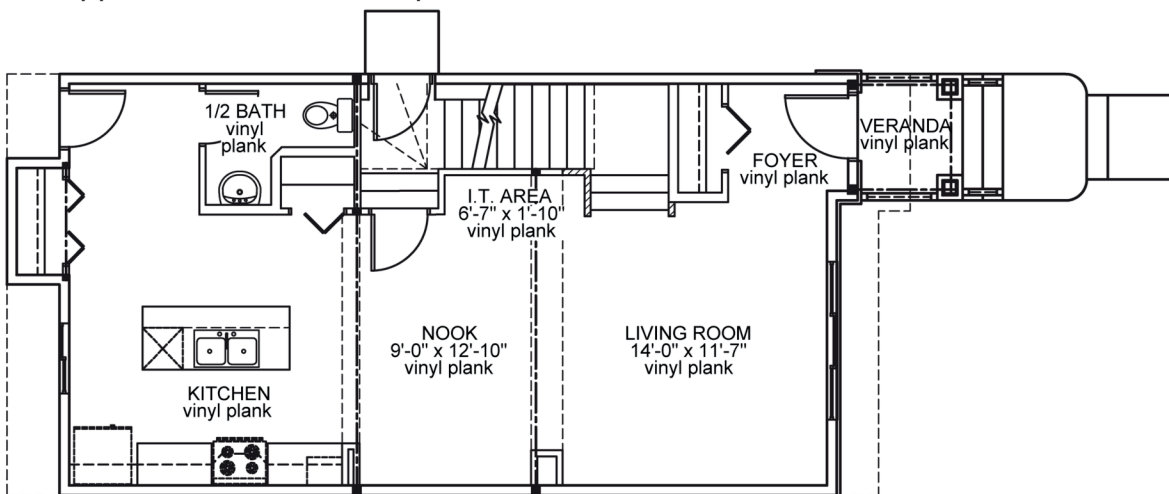
Tile in all Second Floor Bathrooms

Stand-up Shower in Ensuite

High Efficiency Furnace



Upper Floor Area: 796 sqft



Main Floor Area: 761 sqft

JOB 2611-MC - www.montorio.ca - 780-250-0212