

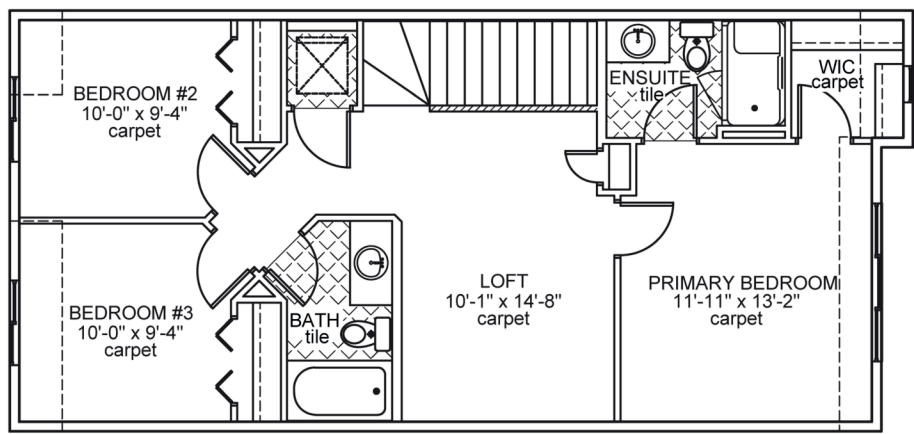


# Novara IV

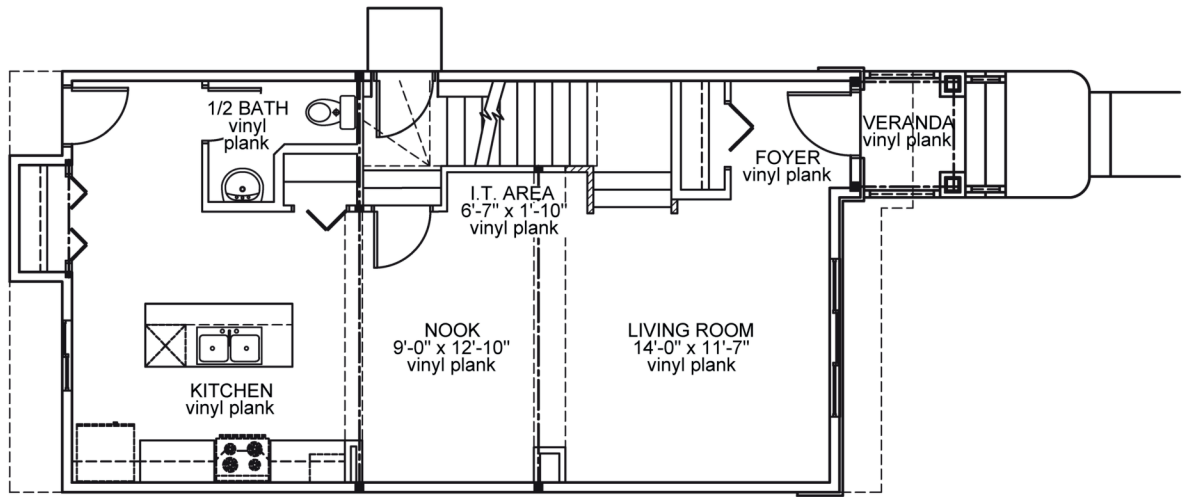
## Job 2610-MC

6254 - 175A Avenue NW

- 1,557 Sq.Ft.
- 9'-1" Main Floor Ceiling Height
- Luxury Vinyl Plank throughout Main Floor
- Side Entrance
- Appliance Allowance
- Quartz Countertops in Kitchen & Bathrooms
- Tile in all Second Floor Bathrooms
- Stand-up Shower in Ensuite
- High Efficiency Furnace



Upper Floor Area: 796 sqft



Main Floor Area: 761 sqft

JOB 2610-MC - [www.montorio.ca](http://www.montorio.ca) - 780-250-0212