

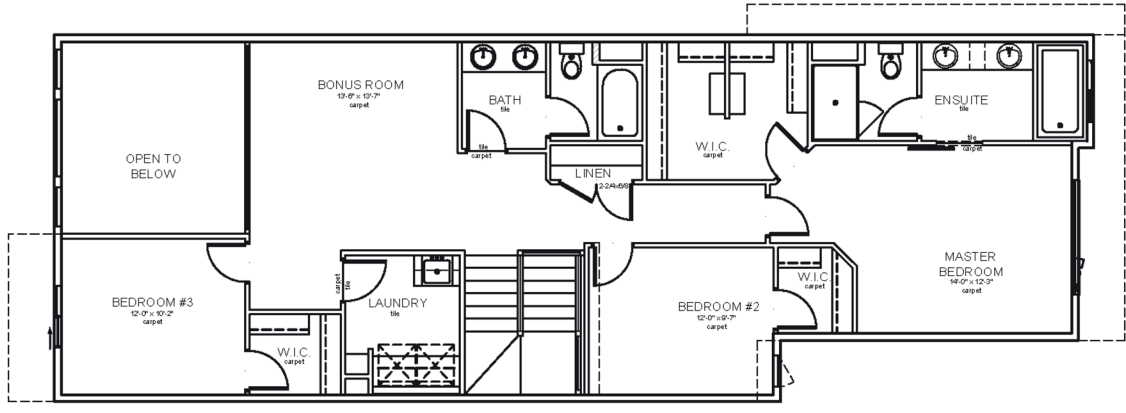
# Venice I

## Job 2596-TP

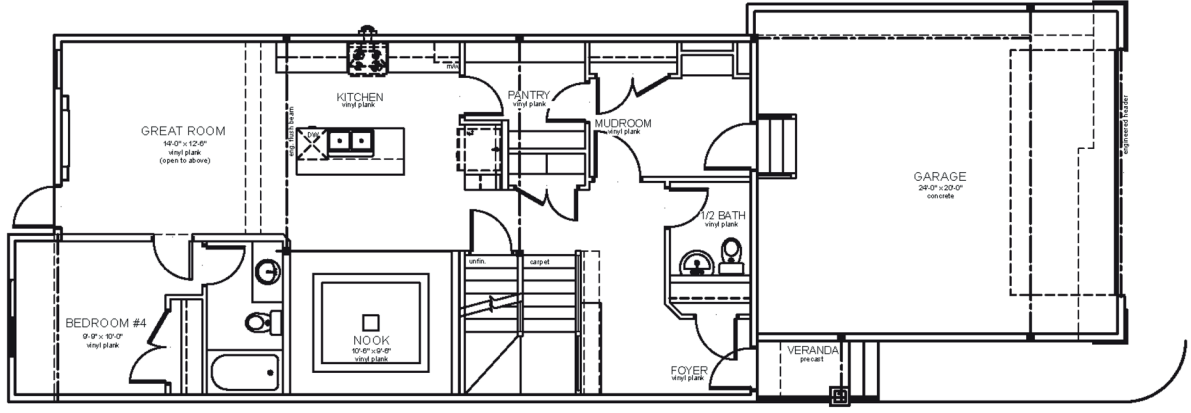
### 13043 - 212 Street NW



- 2,491 Sq.Ft.
- 9'-1" Main Floor Ceiling Height
- Luxury Vinyl Plank throughout Main Floor
- Side Entrance
- Appliance Allowance
- Quartz Countertops in Kitchen & Bathrooms
- Smart Home Security System
- Electric Fireplace in Great Room
- Bedroom & Full Bath on Main Floor
- Railing Throughout
- Tile in all Second Floor Bathrooms
- Stand-up Shower in Ensuite
- Tiled Shower in Ensuite
- Drop-in Tub in Ensuite
- \$17,000 in Interior Design Upgrades
- Triple Pane Windows
- High Efficiency Furnace



Upper Floor Area: 1314 sqft



Main Floor Area: 1137 sqft

JOB 2596-TP - [www.montorio.ca](http://www.montorio.ca)