



Matera I

Job 2556-WB

100 Lilac Close, Leduc



2,849 Sq.Ft.

10'-1" Main Floor Ceiling Height

Luxury Vinyl Plank throughout Main Floor

Side Entrance

Appliance Allowance

Quartz Countertops in Kitchen & Bathrooms

Smart Home Security System

Gas Fireplace in Great Room

Full Bath on Main Floor

Railing Throughout

Tile in all Second Floor Bathrooms

Freestanding Tub in Ensuite

Stand-up Shower in Ensuite

Tiled Shower in Ensuite

Rear Deck with Wood Railing

Three-Car Garage

32 Pocket Partial Walk-out Lot

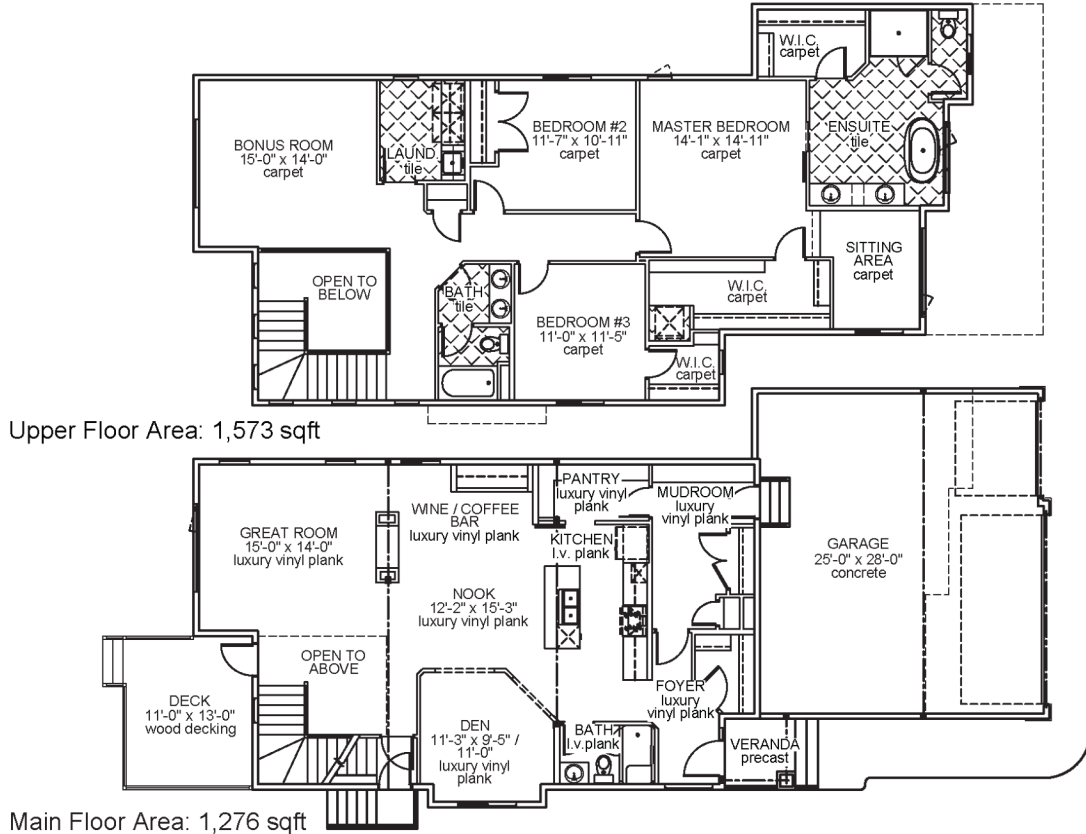
Wine/Coffee Bar Off Kitchen

Corner Lot

\$17,000 in Interior Design Upgrades

Triple Pane Windows

High Efficiency Furnace



JOB 2556-WB - www.montorio.ca

