



# Novara III

**Job 2551-TO**

**3616 - 42 Avenue, Beaumont**

1,268 sqft

9'-1" Main Floor Ceiling Height

Luxury Vinyl Plank throughout Main Floor

Side Entrance

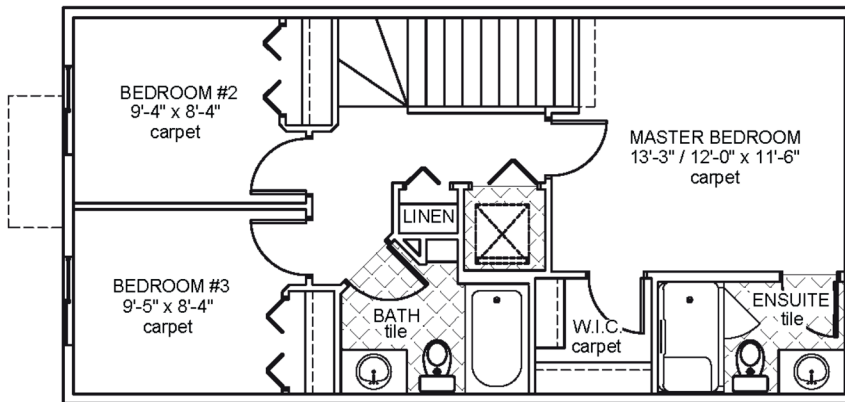
Appliance Allowance

Quartz Countertops in Kitchen & Bathrooms

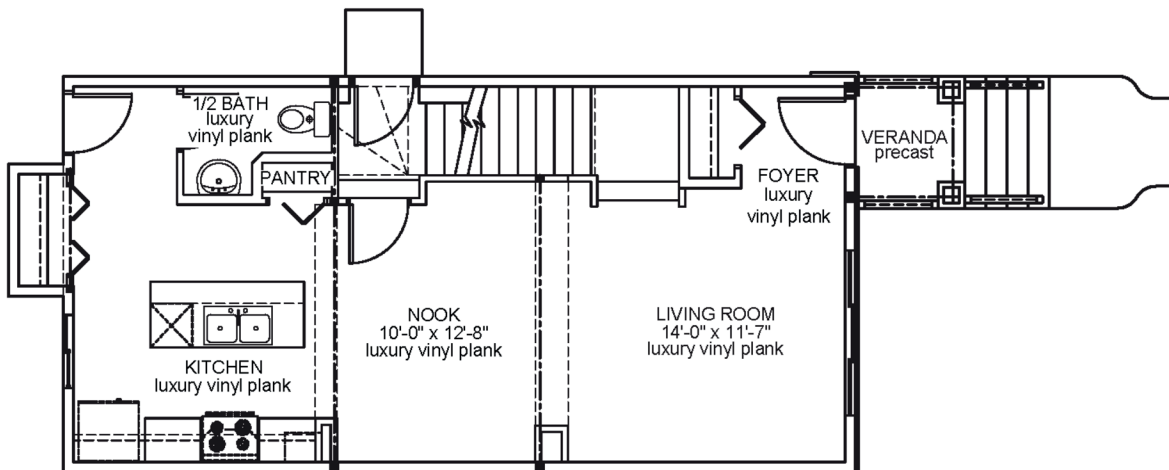
Tile in all Second Floor Bathrooms

Stand-up Shower in Ensuite

High Efficiency Furnace



Upper Floor Area: 605 sqft



Main Floor Area: 663 sqft

JOB 2551-TO - [www.montorio.ca](http://www.montorio.ca) - 780-737-1549