

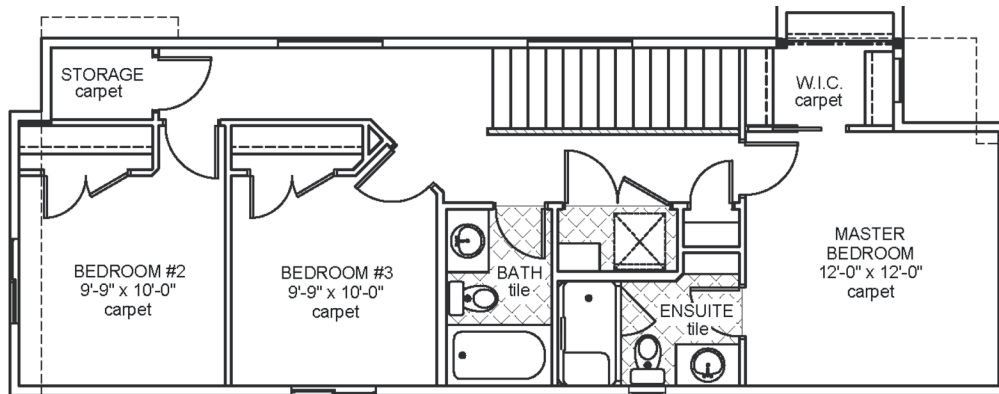


# Savona II

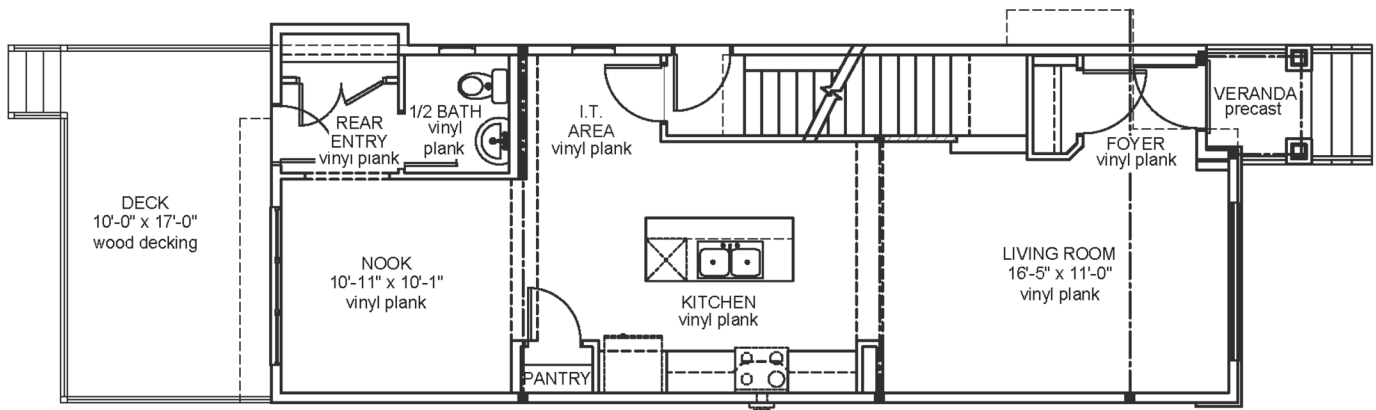
**Job 2491-NWE**

**4639 - 114 Avenue, Edmonton**

- 1,528 sqft
- 9'-1" Main Floor Ceiling Height
- Vinyl Plank throughout Main Floor
- Side Entrance
- Appliance Allowance
- Quartz Countertops in Kitchen & Bathrooms
- Tile in all Second Floor Bathrooms
- Stand-up Shower in Ensuite
- Detached Garage
- High Efficiency Furnace



Upper Floor Area: 747 sqft



Main Floor Area: 781 sqft

JOB 2491-NWE · [www.montorio.ca](http://www.montorio.ca)