

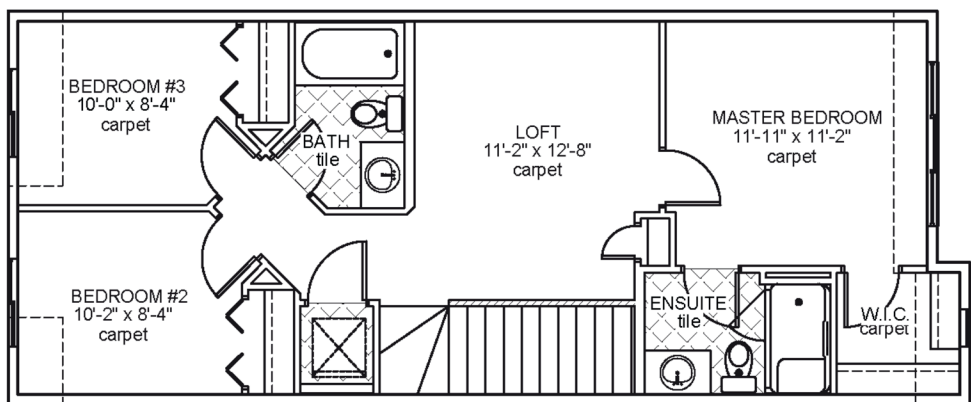


Novara III

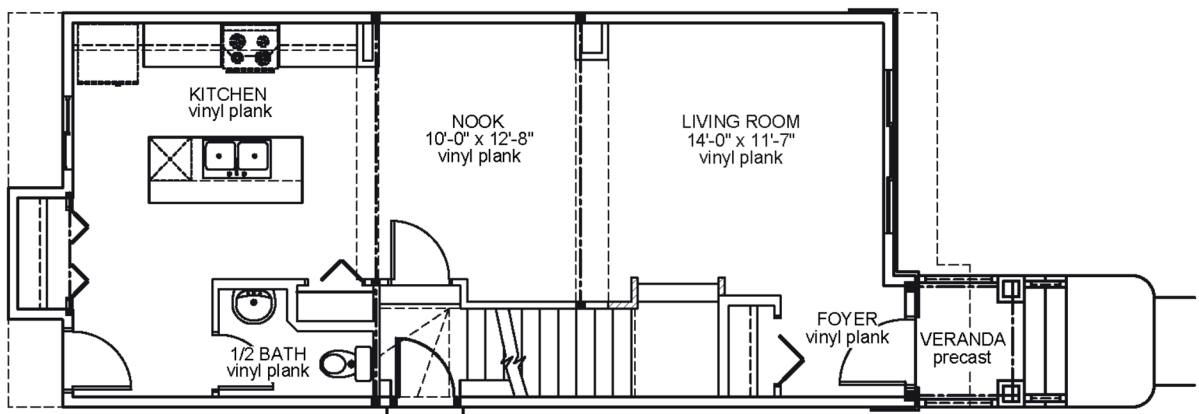
Job 2462-MC

6320 - 175 Avenue NW

- 1,433 Sq.Ft.
- 9'-1" Main Floor Ceiling Height
- Vinyl Plank throughout Main Floor
- Side Entrance
- Appliance Allowance
- Quartz Countertops in Kitchen & Bathrooms
- Tile in all Second Floor Bathrooms
- Stand-up Shower in Ensuite
- High Efficiency Furnace



Upper Floor Area: 728 sqft



Main Floor Area: 705 sqft

JOB 2462-MC - www.montorio.ca - 780-250-0212