

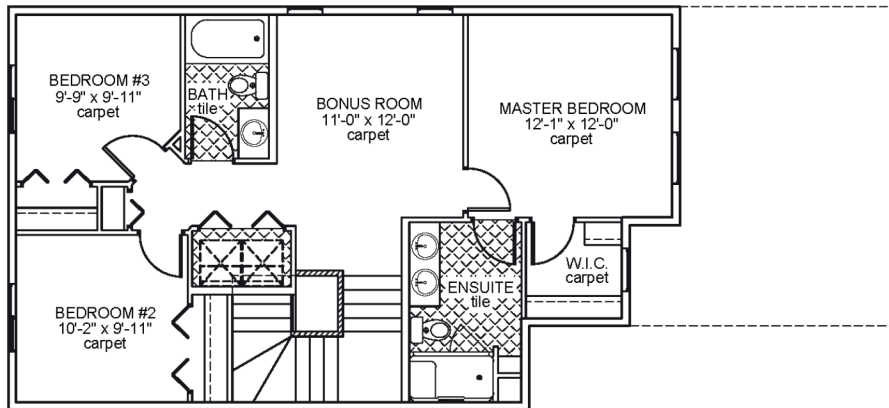


Portofino I

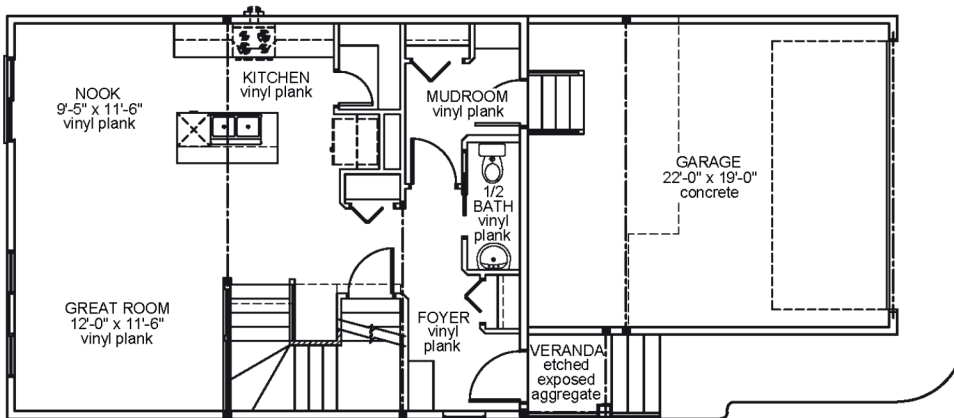
Job 2472-FW

84 Fenwyck Blvd, Spruce Grove

- 1,569 Sq.Ft
- 9'-1" Main Floor Ceiling Height
- Vinyl Plank throughout Main Floor
- Quartz Countertops in Kitchen & Bathrooms
- Appliance Allowance
- Tile in all Second Floor Bathrooms
- Stand-up Shower in Ensuite
- Side Entrance



Upper Floor Area: 825 sqft



Main Floor Area: 744 sqft

JOB 2472-FW - www.montorio.ca