

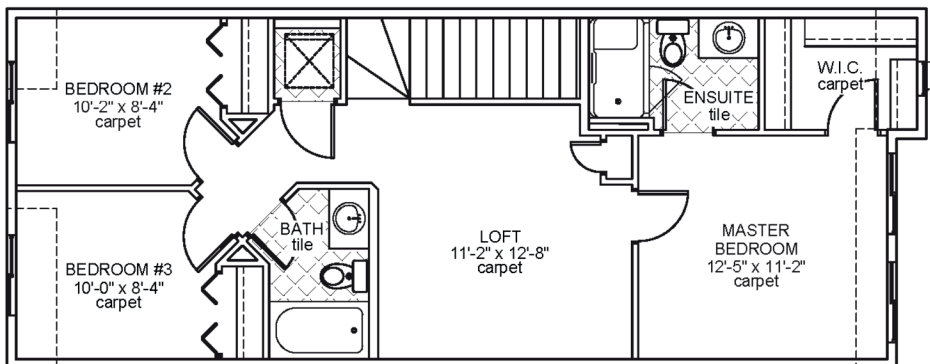


Novara III

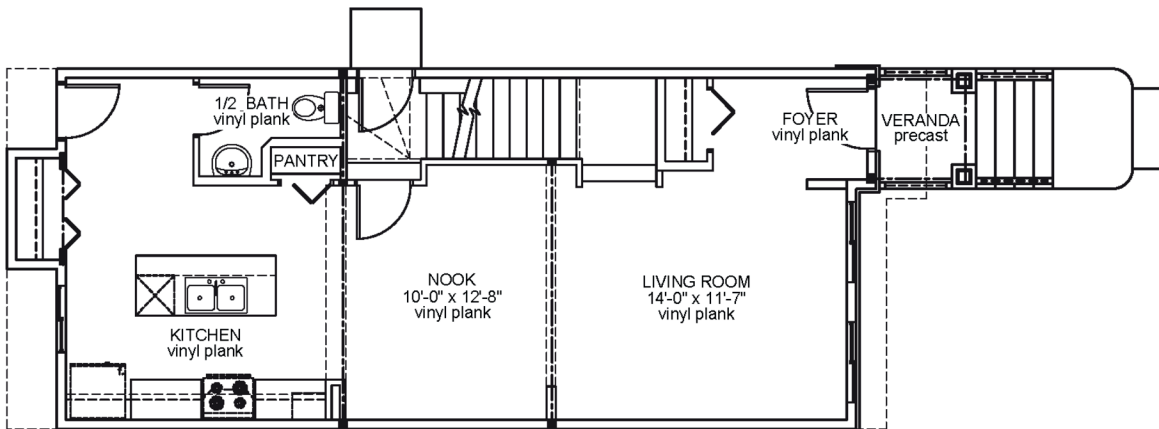
Job 2528-DM

6315 - 67 Street, Beaumont

- 1,505 sqft
- 9'-1" Main Floor Ceiling Height
- Vinyl Plank throughout Main Floor
- Side Entrance
- Appliance Allowance
- Quartz Countertops in Kitchen & Bathrooms
- Tile in all Second Floor Bathrooms
- Stand-up Shower in Ensuite
- High Efficiency Furnace



Upper Floor Area: 764 sqft



Main Floor Area: 741 sqft

JOB 2528-DM - www.montorio.ca - 780-737-1549