

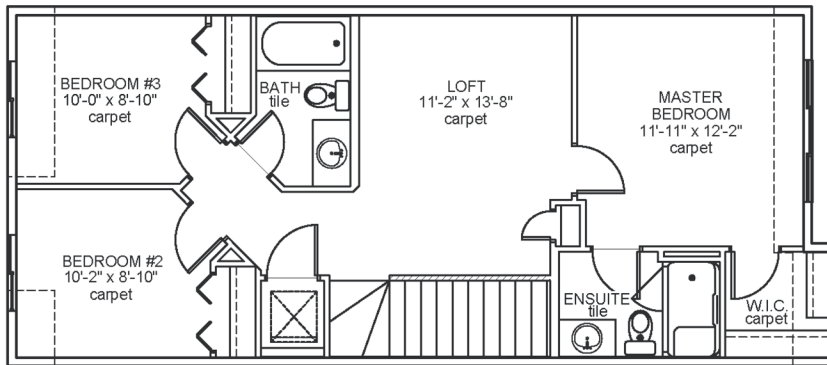
# Novara III

## Job 2501-MC

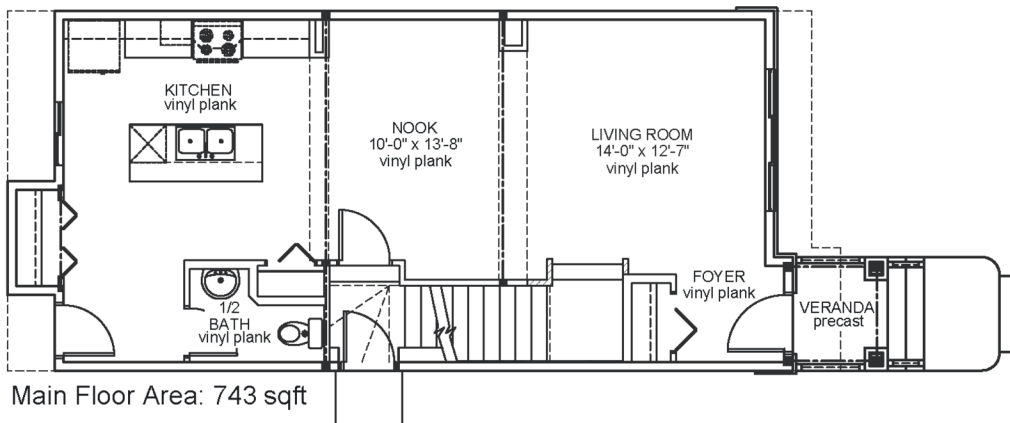
6308 - 175 Avenue NW



- 1,513 sqft
- 9'-1" Main Floor Ceiling Height
- Vinyl Plank throughout Main Floor
- Side Entrance
- Appliance Allowance
- Quartz Countertops in Kitchen & Bathrooms
- Tile in all Second Floor Bathrooms
- Stand-up Shower in Ensuite
- High Efficiency Furnace



Upper Floor Area: 770 sqft



Main Floor Area: 743 sqft

JOB 2501-MC - [www.montorio.ca](http://www.montorio.ca) - 780-250-0212