

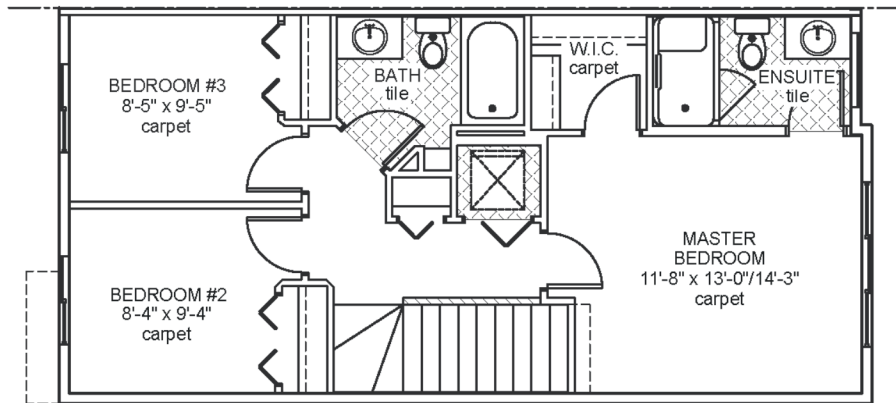
Novara II

Job 2495-DM

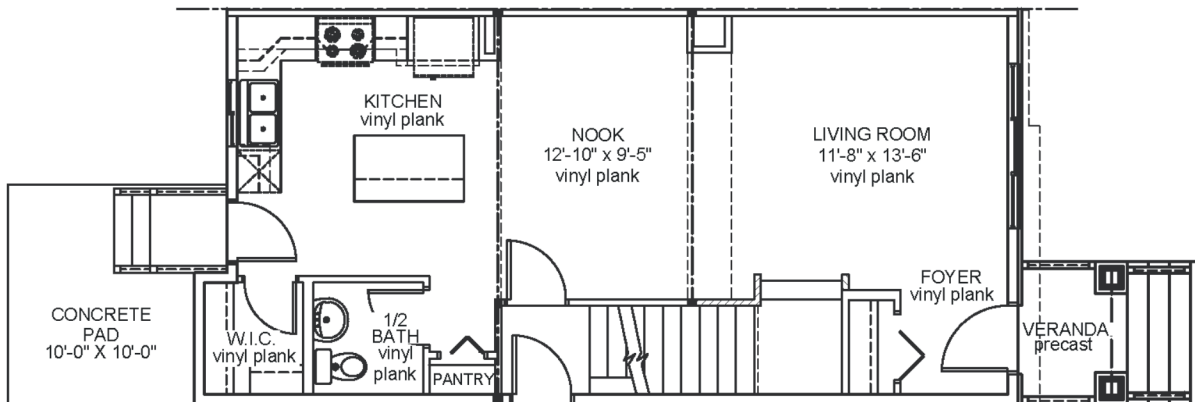
78 Dansereau Way, Beaumont



- 1,275 sqft
- 9'-1" Main Floor Ceiling Height
- Vinyl Plank throughout Main Floor
- Quartz Countertops in Kitchen & Bathrooms
- Tile in all Second Floor Bathrooms
- Appliance Allowance
- Side Entrance
- Stand-up Shower in Ensuite
- Double Detached Garage
- Rear Concrete Patio
- No Condo Fees
- Front & Rear Landscaping



Upper Floor Area: 619 sqft



Main Floor Area: 656 sqft

JOB 2495-DM - www.montorio.ca - 780-737-1549

