

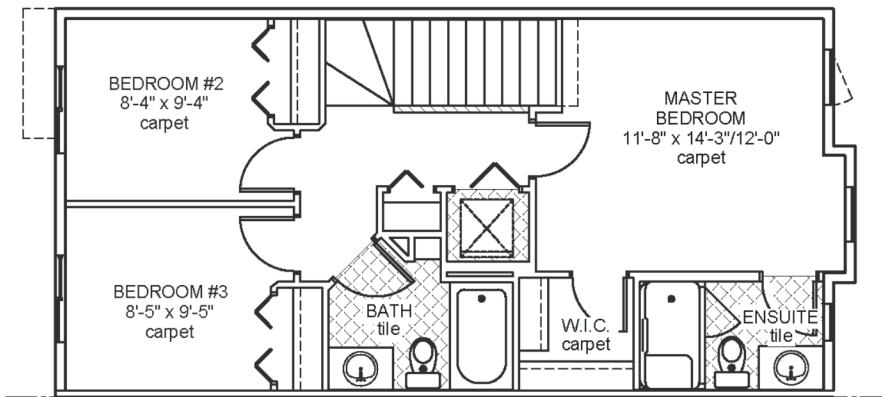
# Novara II

## Job 2493-DM

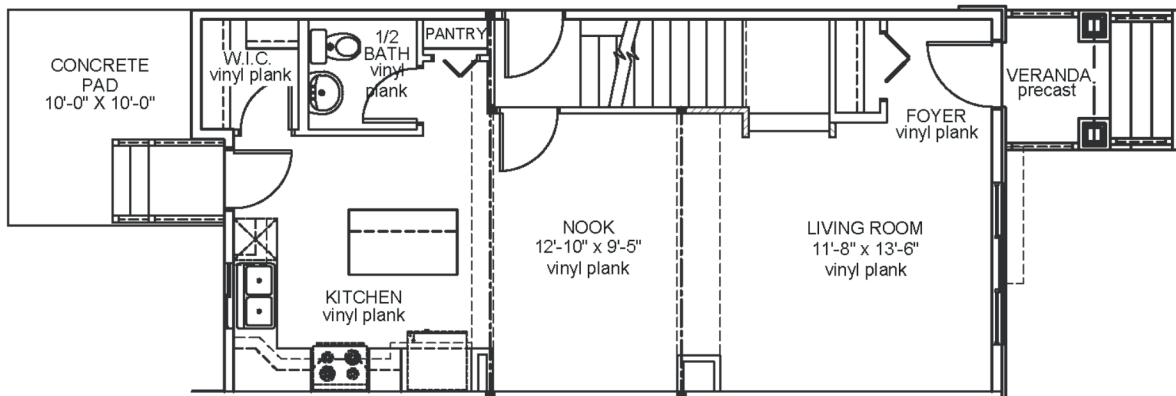
74 Dansereau Way, Beaumont



- 1,263 sqft
- 9'-1" Main Floor Ceiling Height
- Vinyl Plank throughout Main Floor
- Quartz Countertops in Kitchen & Bathrooms
- Tile in all Second Floor Bathrooms
- Appliance Allowance
- Side Entrance
- Stand-up Shower in Ensuite
- Double Detached Garage
- Rear Concrete Patio
- No Condo Fees
- Front & Rear Landscaping



Upper Floor Area: 610 sqft



Main Floor Area: 656 sqft

JOB 2493-DM - [www.montorio.ca](http://www.montorio.ca) - 780-737-1549