

Novara III

Job 2501-MC

6308 - 175 Avenue NW



1,513 sqft

9'-1" Main Floor Ceiling Height

Vinyl Plank throughout Main Floor

Side Entrance

Appliance Allowance

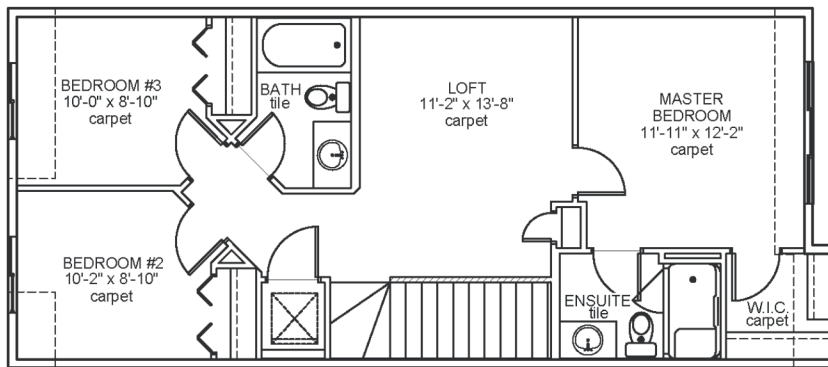
Quartz Countertops in Kitchen & Bathrooms

Tile in all Second Floor Bathrooms

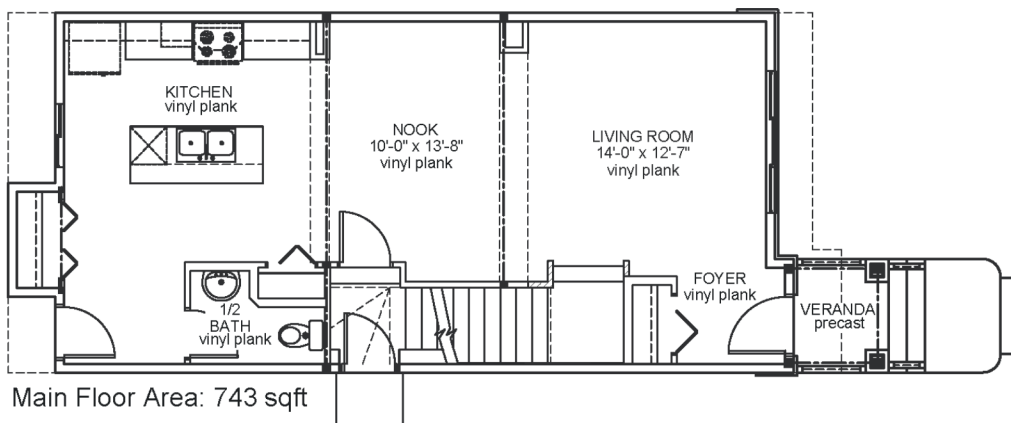
Stand-up Shower in Ensuite

High Efficiency Furnace

Includes Legal Fees (when using Montorio Homes' lawyer and approved lender)



Upper Floor Area: 770 sqft



Main Floor Area: 743 sqft

JOB 2501-MC - www.montorio.ca - 780-250-0212