

# Augusta I

## Job 2500-MC

6312 - 175 Avenue NW

1,708 sqft

9'-1" Main Floor Ceiling Height

Vinyl Plank throughout Main Floor

Side Entrance

Appliance Allowance

Quartz Countertops in Kitchen & Bathrooms

Tile in all Second Floor Bathrooms

Stand-up Shower in Ensuite

Bedroom & Full Bath on Main Floor

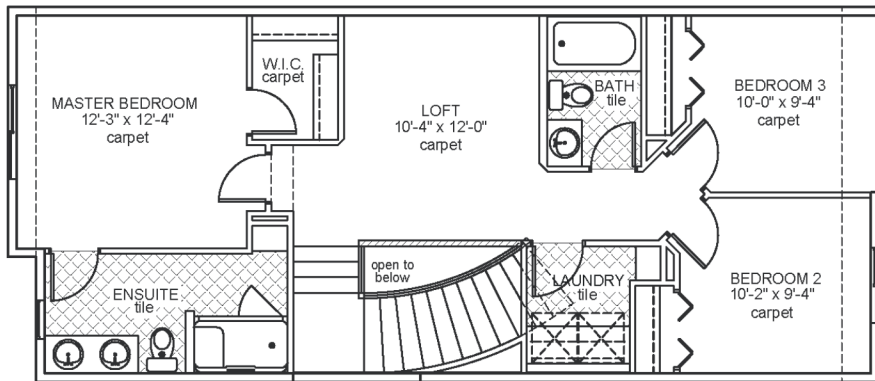
Smart Home Security System

Electric Fireplace in Great Room

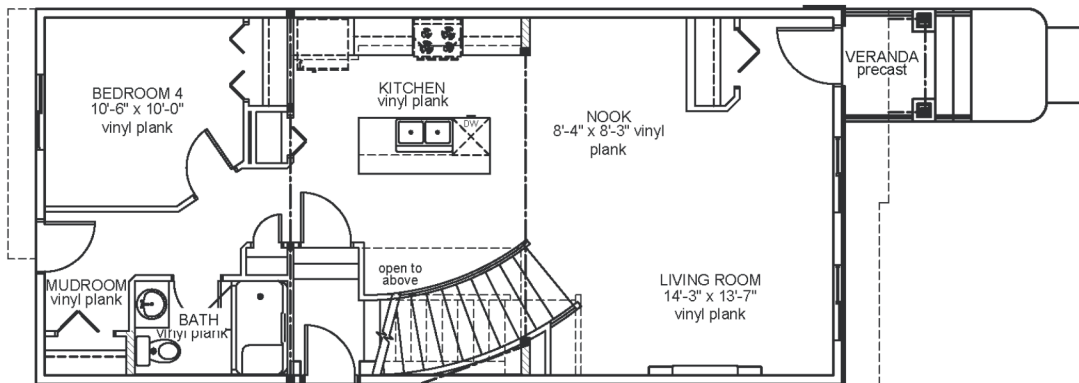
Triple Pane Windows

High Efficiency Furnace

Includes Legal Fees (when using Montorio Homes' lawyer and approved lender)



Upper Floor Area: 860 sqft



Main Floor Area: 848 sqft

JOB 2500-MC - [www.montorio.ca](http://www.montorio.ca) - 780-250-0212