



# Savona II

**Job 2491-NWE**

**4639 - 114 Avenue, Edmonton**

1,528 sqft

9'-1" Main Floor Ceiling Height

Vinyl Plank throughout Main Floor

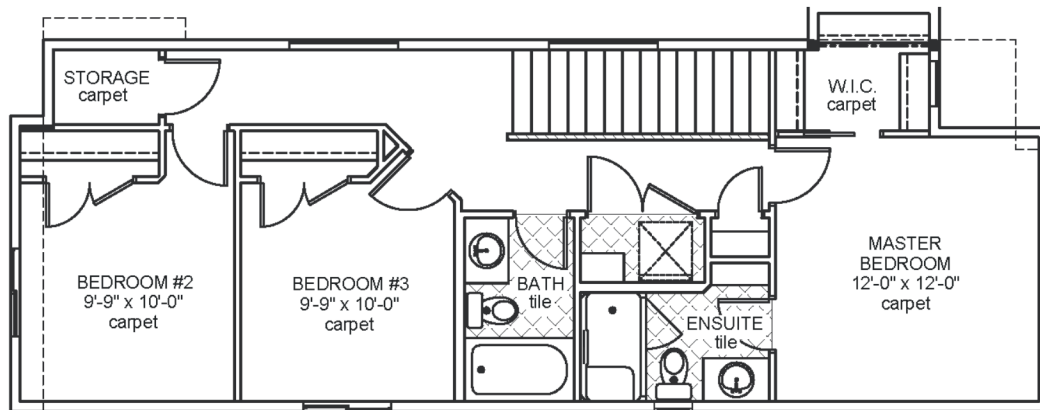
Side Entrance

Appliance Allowance

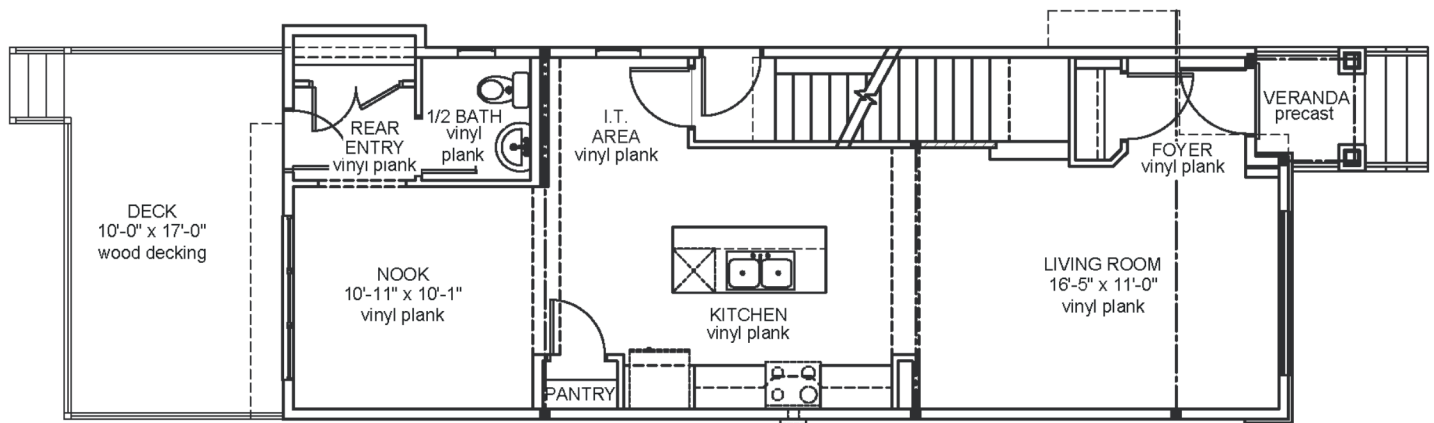
Quartz Countertops in Kitchen & Bathrooms

Tile in all Second Floor Bathrooms

Stand-up Shower in Ensuite



Upper Floor Area: 747 sqft



Main Floor Area: 781 sqft

JOB 2491-NWE · [www.montorio.ca](http://www.montorio.ca)